

# MONTHLY MEMBERSHIP PROGRESS REPORT

LOCATION INDIA

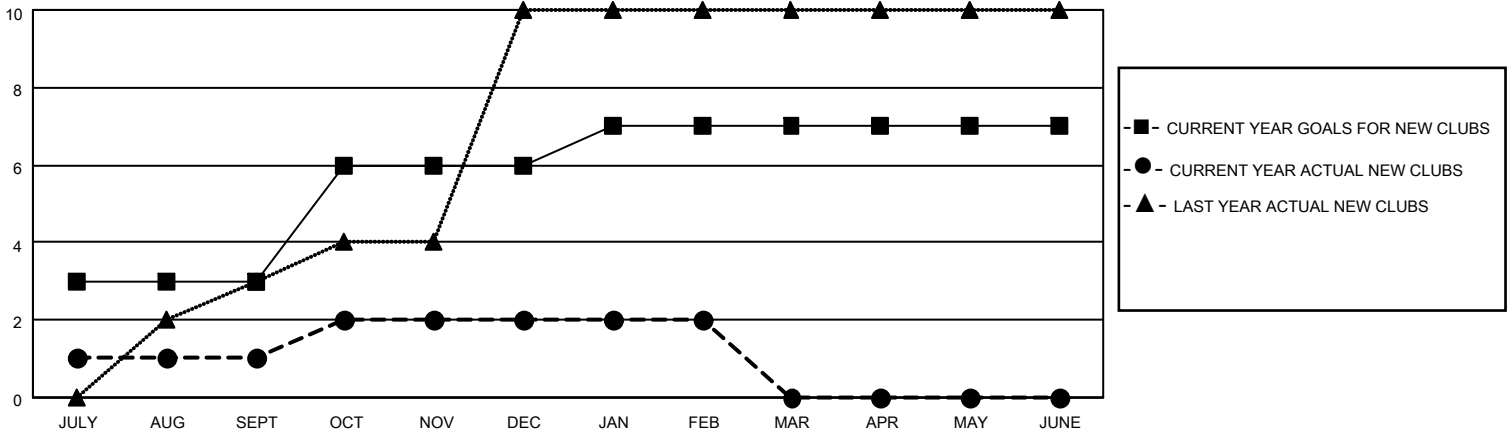
District 322C3

Results as of: 2/28/2022

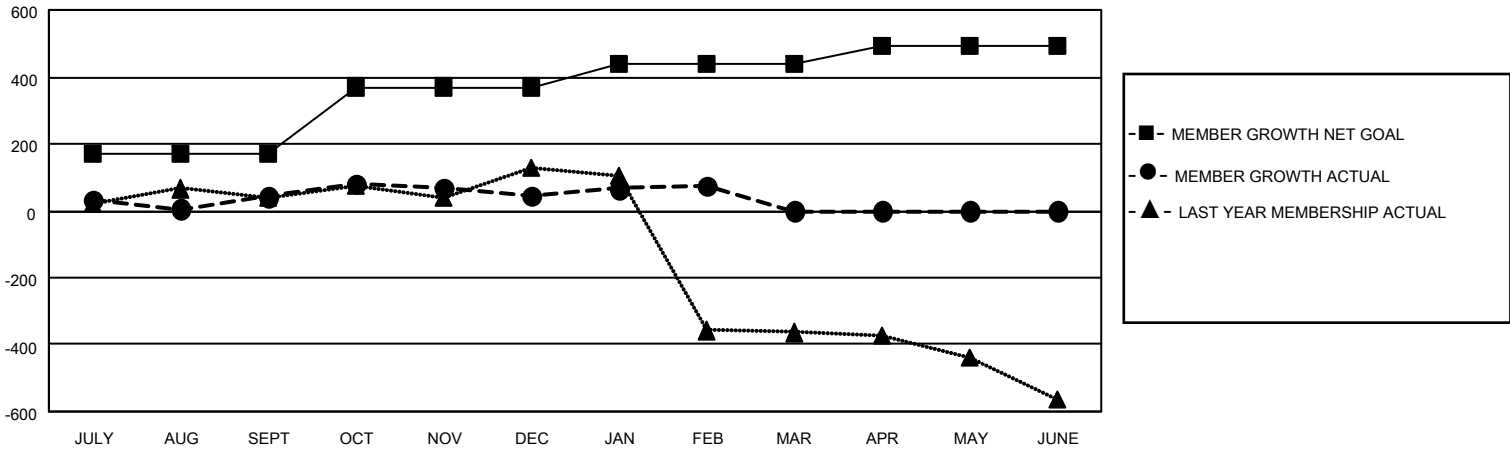
Clubs			
RESULTS FOR 2021-2022			
QUARTER	NEW CLUB GOAL	NEW CLUBS	DROPPED CLUBS
JULY/AUG/SEPT	3	1	5
OCT/NOV/DEC	3	1	2
JAN/FEB/MAR	1	0	0
APR/MAY/JUNE	0	0	0

Members			
RESULTS FOR 2021-2022			
QUARTER	MEMBER GROWTH NET GOAL	MEMBER GROWTH ACTUAL	DROPPED MEMBERS ACTUAL (including transfers)
JULY/AUG/SEPT	170	152	85
OCT/NOV/DEC	200	132	124
JAN/FEB/MAR	70	80	23
APR/MAY/JUNE	50	0	0

**GOALS AND ACTUAL NEW CLUBS CUMULATIVE**



**GOALS AND ACTUAL MEMBERS CUMULATIVE**



**DROPPED CLUBS: 7**

**48 CLUBS OF 97 ADDED 1 OR MORE NEW MEMBERS**

**GENDER DISTRIBUTION**

MALE	2,311 (74.40%)
FEMALE	795 (25.60%)
NON BINARY	0 (0.00%)
PREFER NOT TO ANSWER	0 (0.00%)

**DROPPED MEMBERS**

[CLICK HERE FOR CUMULATIVE MEMBERSHIP DATA](#)

DECEASED	16
CLUB CANCELLED	90
OTHER	126
<b>TOTAL</b>	<b>232</b>

TOTAL FAMILY UNIT MEMBERS	2,059
FAMILY MEMBERS PAYING HALF DUES	1,340